



RSC Condensing Unit Frame Assembly & Installation

Kit #: 1238795

Document Part #: 1238523

ECN: 58203

Revision: C

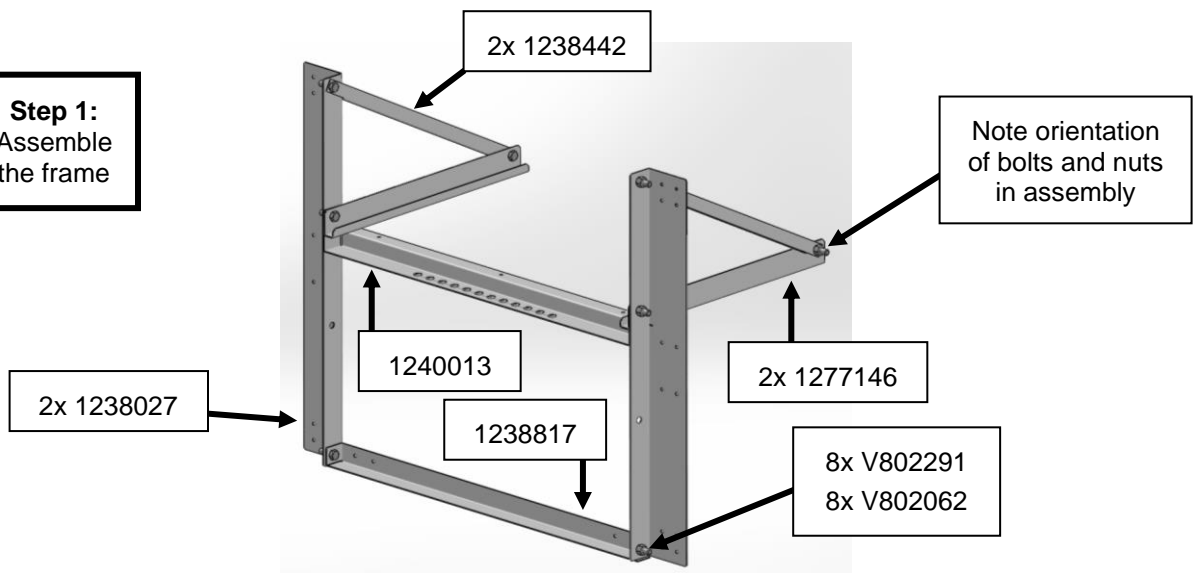
Date: 1-26-21

Subject: Installation Instructions, RSC Condensing Unit frame assembly and installation

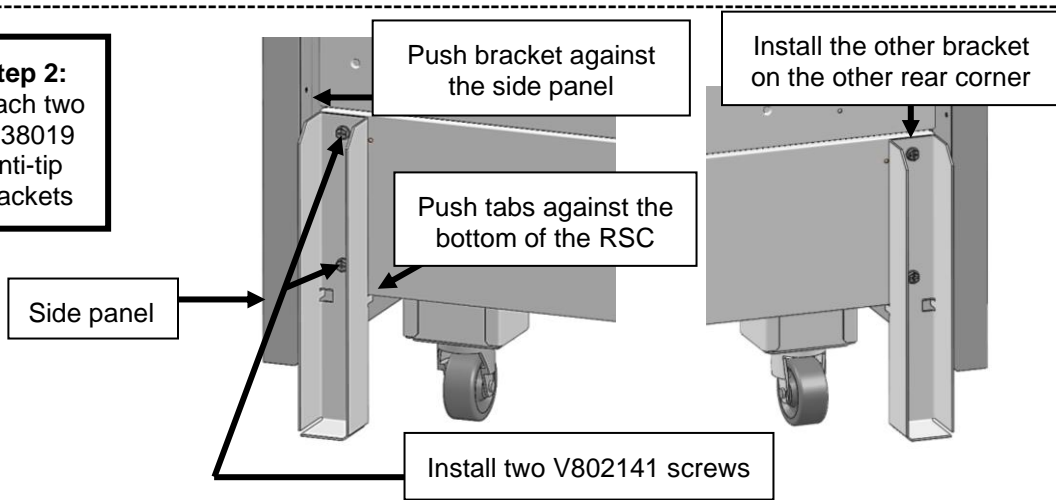
Parts List

Quantity	Part Number	Description
2	1238019	Bracket, Anti-Tip
2	1238442	Bracket, Condenser, Angle
2	1238027	Bracket, Condenser, Vertical
2	1277146	Bracket, Condenser, U-Channel
1	1240013	Crossbrace, Upper, Condenser
1	1238817	Crossbrace, Lower, Condenser
1	1240005	Clamp, Condenser Tie-Down
8	V802291	Bolt, 3/8-16 x 1 Hex Head
8	V802062	Nut, 3/8-16, Nylok
27	V802141	Screw, 10-16 x ½ Hex Head
2	V802087	Screw, 8-15 x ½ Truss Head
1	1028847	Dryer C-053-S Sporlan
1	1028855	Sight Glass SA-13S Sporlan
1	1246895	Line set, Copper, RSC, 10 ft.

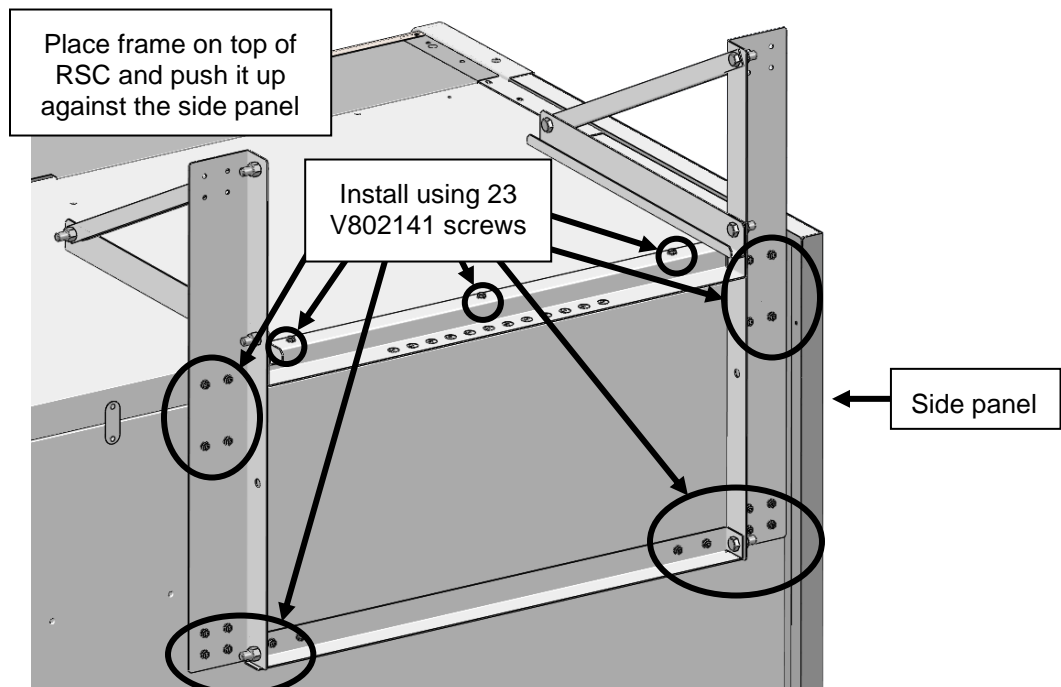
Step 1:
Assemble
the frame



Step 2:
Attach two
1238019
anti-tip
brackets

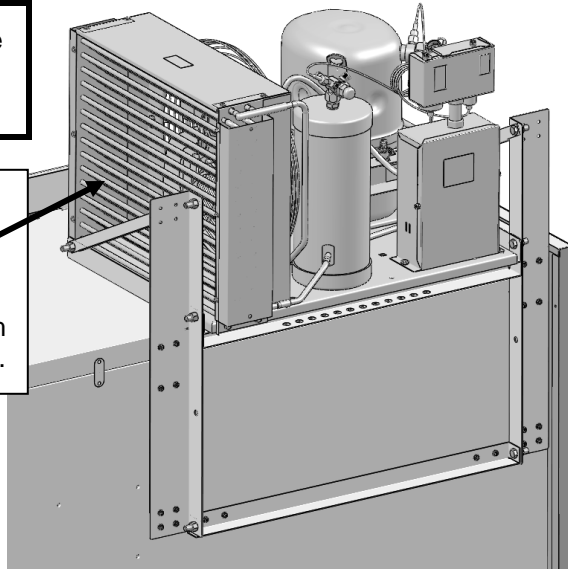


Step 3:
Attach
frame to
RSC



Step 4: Place condensing unit on frame

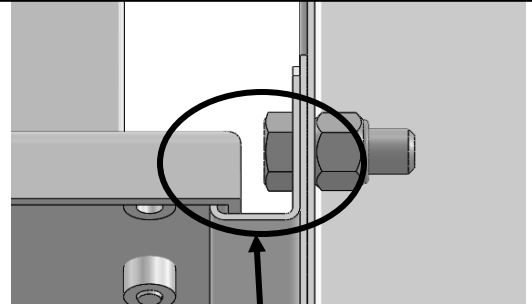
Condenser must be this side.
Appearance may vary from image at right.



Note: Condensing unit shipped separately

CAUTION: Condensing unit is heavy; two or more persons should lift it into place.

Note: The top of the RSC is not designed to support the condensing unit without the frame.



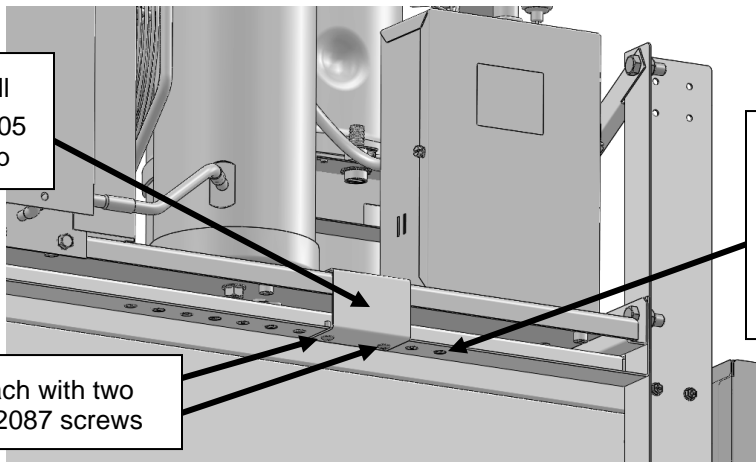
Insure the condensing unit base fits over U-Channels (both front and back)

Step 5: Install clamp

Install 1240005 clamp

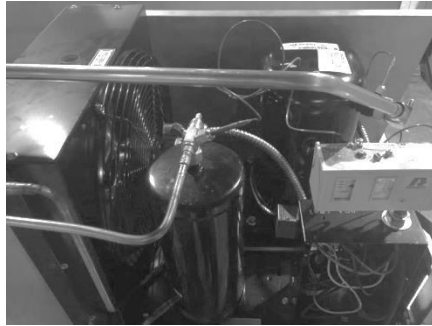
Attach with two V802087 screws

There are multiple mounting holes so the clamp can be located in a position that won't interfere with items on the condensing unit



Note: Steps 6 through 9 must be performed by a qualified refrigeration technician.

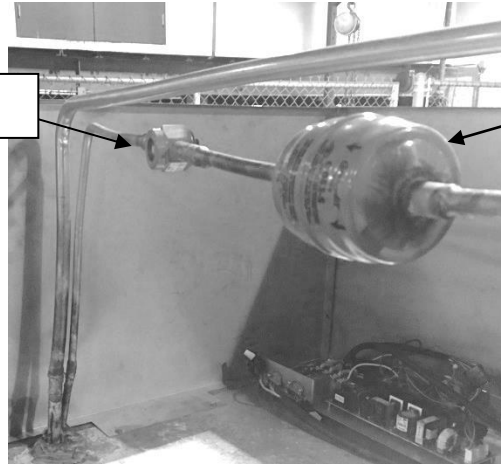
Step 6: Using the provided line set, connect the outlet and inlet of the display case to the condensing unit as shown in the pictures.



Note: The line set should NOT be cut but coiled up to the right length. Install the provided filter/drier and sight glass on the liquid line.

1028855

1028847



Step 7: Insulate the suction line using the insulation provided in the kit.

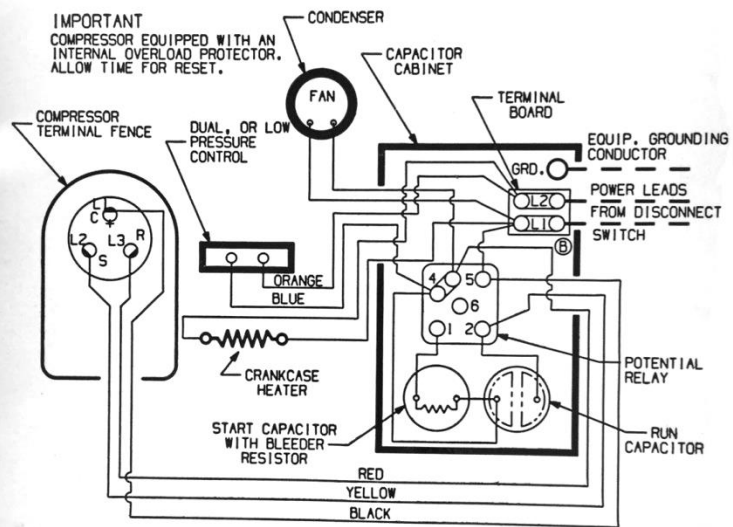


Step 8: Connect the electrical box on the condensing unit to a power source as shown in the attached figure. The condensing unit is rated for 208/230V-1-60 Hz.

VDPTCU005 = 21.6A MCA

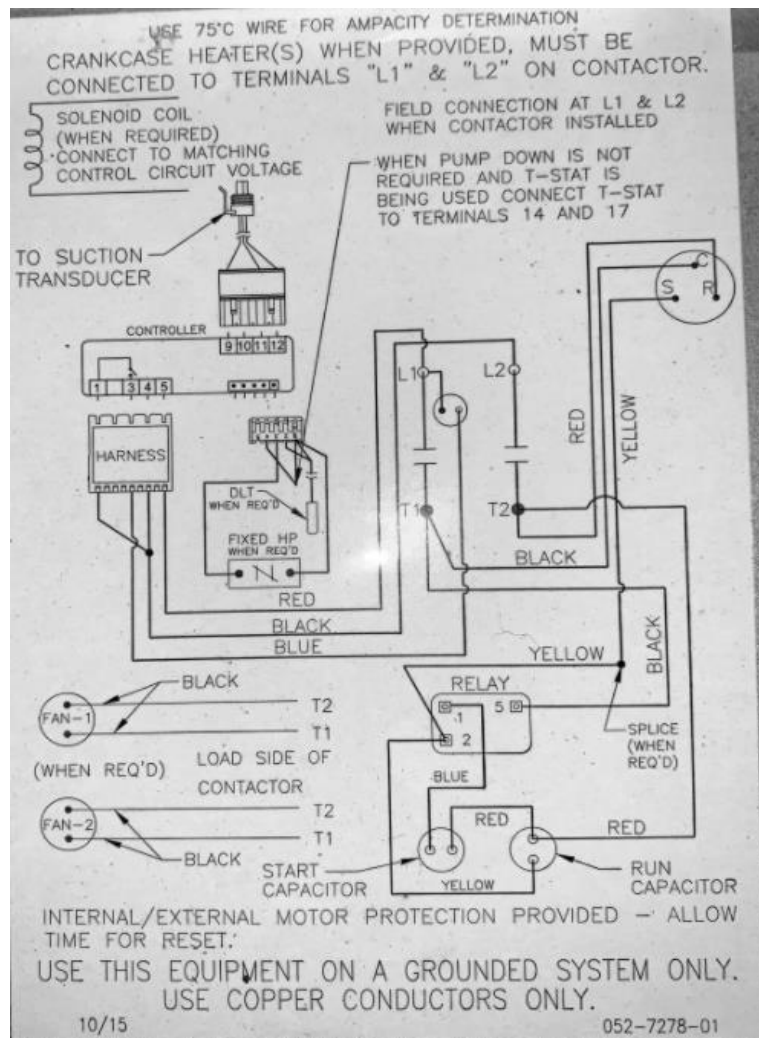
VDPTCU006 = 14.9A MCA

VDPECU003 = 17.2 MCA



ELECTRICIAN TO MAKE THE FOLLOWING CONNECTIONS ONLY:
 1. CONNECT INCOMING POWER LEADS FROM DISCONNECT SWITCH TO L1 AND L2 IN CAPACITOR CABINET CONSISTENT WITH NAMEPLATE VOLTAGE AND FREQUENCY. USE COPPER CONDUCTORS ONLY. (EMPLOYER DES CONDUCTEURS DE CUIVRE SEULEMENT.) PROVIDE EQUIPMENT GROUNDING CONDUCTOR. USE 75°C (MIN.) WIRING.

- NOTE: A - WIRING IS NOT AFFECTED IF CRANKCASE HEATER AND ITS CONNECTIONS ARE OMITTED.
 B - WITH ANY T.C.Co. APPROVED START RELAY USED, CONNECT LEADS TO SAME NUMBERED TERMINALS REGARDLESS OF LOCATION.
 C - WIRING IS NOT AFFECTED IF DUAL OR LOW PRESSURE CONTROL IS SUPPLIED BY CUSTOMER.



10/15

052-7278-01

Step 9:

- a.) Confirm that the unit is free of leaks using pressurized nitrogen at approximately 150 psig and then pull a vacuum down to 200 microns for at least 30 minutes.
- b.) Charge the unit with 3 lbs. of R404a / R448a into the receiver. Break the vacuum on the low side prior to starting the unit.
- c.) Turn 'ON' the power to the condensing unit and the display case. Turn the display case 'ON'. The high side pressure should be approximately 30°F above the ambient temperature. Add refrigerant if needed.
- d.) Set the low pressure switch to 40 PSIG with a differential of 30 PSIG.
- e.) Wait for at least 1 hour prior to placing product in the unit.