

GF9-H

VEC 2.0

PROGRAMMING SECTION

VEC 2.0 PROGRAMMING OPERATION

KEYWORDS:

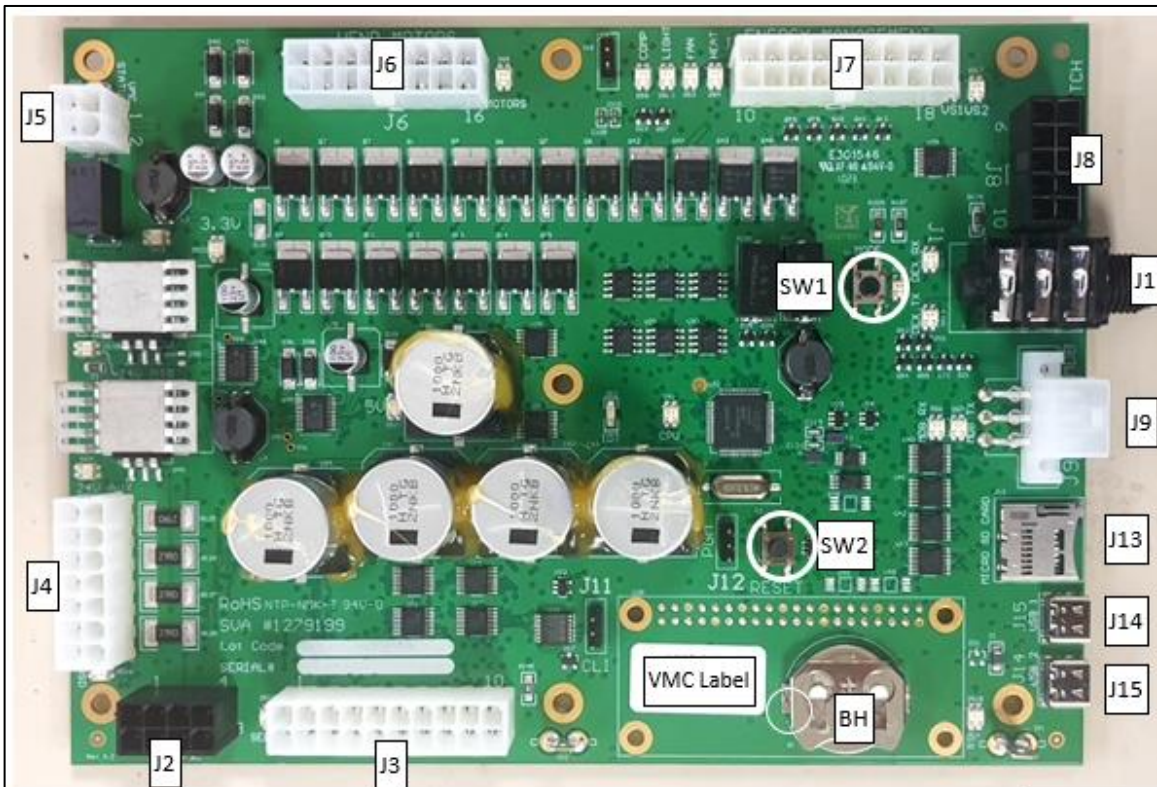
VMC - VENDING MACHINE CONTROLLER **DMC**- DELIVERY MECHANISM CONTROLLER

The VEC 2.0 Controller uses a 4-button programming system:

Programming Buttons: # 1 – Exit/ Home
2 – Increase/ Advance
3 – Decrease/ Backup
4 – Enter/ Save

1	2	3
4	5	6
7	8	9
CLR	0	ENT

DISPLAY KEYPAD



- SW1: MODE SWITCH
- SW2: RESET SWITCH
- BH: BATTERY HOLDER
- J1: DEX PORT
- J2: DISPLAY
- J3: SELECTION SWITCH INPUT
- J4: HOPPER OPTICS
- J5: 24V POWER
- J6: BUCKET MTR, COIN RETURN MTR & HOPPER LED
- J7: ENERGY MANAGEMENT
- J8: OVERRIDE / AUX. DEX PORT
- J9: MDB PORT
- J13: Micro-SD Card
- J14-J15: USB-C

VMC BOARD: PART # 1279786-22.XX (XX: Refer to VMC Label for latest firmware)

On Board - Diagnostics LED

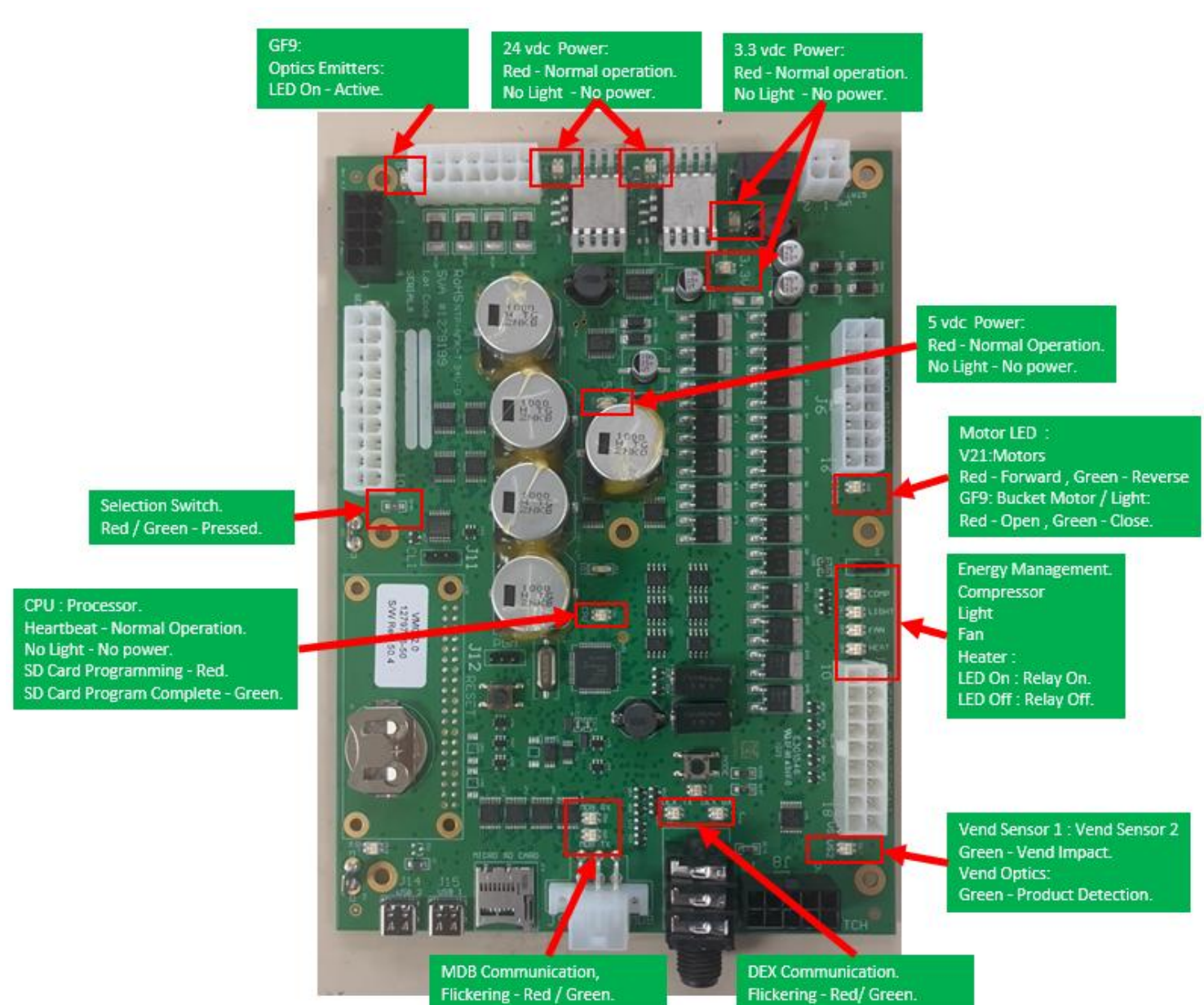
The VMC board is designed with on-board LED light for efficient troubleshooting.

The LED light will turn on based on the function of the board.

LED lights placed beside each connector will light up to indicate the port is active.

Example: Comp LED beside J7 will light up to indicate the Compressor is on.

The following diagram shows the LED lights and their functions.



IMPORTANT INFORMATION:**General Process Description:**

Ready to Vend Position: The catcher is at the bottom corner towards the hinge side of the machine – the fork on the catcher is pointing towards the trays.

Initialization Process: This process is activated during power up and Door Close scenario.

The catcher will rotate 90 Degrees clockwise, to confirm Z movement.

The catcher will move sideways about 3 inches away from the hinge side and will move back to the original position – to confirm X- location.

The catcher will move up about 4 inches and back to the base – to confirm the Y-location.

The catcher will perform a vend drop movement – to confirm that there is no product in the catcher.

The catcher will move up along the hinge side of the machine then towards the right and diagonally back to the original position – to confirm the shelf locations.

The catcher will rotate 90 degrees anti-clockwise to return to the Ready to Vend Position.

Recovery Process: This process is activated anytime there is a physical obstruction during the catcher or elevator movement. The vendor will initiate the initialization process on any motor jam. The vendor retries 5 times before terminating the recovery process. If the vendor fails to recover during its 5 retries, the machine is out of order.

To access Mode functions, open the door. Locate the Mode Button (SW1) on the Main Control Board and press until "Diagnostics" appears. Use selection button 2 or 3 to navigate through the modes.

The Modes are as follows:

Diagnostics
Coin Payout
Tube Fill
Test Mode
Cash Data
Sales Data
Discount Counter*
Free Counter*
Set Price
Space To Sales
Shelf Location
Configuration
Door Closed Password
Set Language
Set Clock **
Lighting **
Refrigeration ***
Sales Block 1-8 **
Discount **
Override ****
Custom Message
Return

* For the Discount Counter and/ or Free Vend Counter to work, the option must be turned on and Set Clock Function must be activated and set. An override switch is required to activate the counters.

** These modes will only appear when the Timing Features in Configuration is turned On.

*** Limited options appear in this mode depending on whether the Timing Features in Configuration is On/Off.

**** A secondary 'kit' is required for this option.

Note: Items that are in quotes, for example: "X Motor", are what is displayed on the 20 character display:

Diagnostics:

Press Button 4 to enter Diagnostics Mode. If no errors have occurred, the display will read "Error None". If an error code displays, enter the code using Button 4. Press Button 2 to advance through the 'detailed summary' of the individual error codes. To clear the errors, press and hold Button 4. The display will read "Error None". To exit the Diagnostics Mode, press Button 1.

Coin Payout:

Coin Payout Mode allows the operator to test for proper operation of the coin changer.

1. Enter on Button 4.
2. Advance on Button 2 to choose denomination.
3. Enter on Button 4 to dispense denomination displayed.
4. Exit on Button 1.

Tube Fill:

The changer coin tubes can be filled via the external coin insert plate or the acceptor part of the changer. This mode enables the Control Board to keep an accurate count of the coins.

1. Enter on Button 4.
2. Insert coins through either the coin inserts slot or acceptor part of the changer. The controller will display the value and quantity of coins in the changer tubes.

Test Mode:

Test Mode Vending:

Up to five products can be vended in this mode.

1. Press Button 4 – Display will read "Close Door to Vend".
2. Close the outer door.
3. The elevator will perform its initialization routine.
4. Display will read "Please make a selection".
5. Product should dispense.

Test Mode Automated Check:

This mode is automated test mode and is designed to check all the operation in vending mode. This checks the Display, Keypad, Relays, Hopper Bucket operation, coin return operation and payment system.

1. Press Button 4.
 - a. This will automatically sequence through to check the display, keypad, relays, hopper operation, coin return operation and payment system.

Each check operation is allocated 15 seconds.

Test Mode Test Hopper Operation

1. Enter on Button 4 – “Testing in Progress” followed by ‘Hopper Bucket open/ Hopper Bucket close’ will display while performing these actions.
2. Confirm to make sure the display reads” Bucket Test Successful”
3. Exit on Button 1.

Test Mode Sensor Status:

1. Enter on Button 4 - Sensor Status display as follow:

ESCR |BCKT |FLP:

M●|S o |M●|B● |S●

The above status shows the vendor is in a “ready to vend” mode – otherwise check the respective sensor/ switch.

ESCR M : Escrow Motor Switch

ESCR S : Escrow Switch

BCKT M: Bucket Motor Switch

BCKT B: Bucket Base Switch

FLP S: Delivery Port Flap Switch

● : Switch is activated o : Switch is deactivated

Test Mode Display:

1. Enter on Button 4
2. 20'''^" on each line should illuminate or all pixels should be illuminated.
3. Exit on Button 1

Test Mode Switches:

1. Enter on Button 4
2. Activation of individual selection buttons (1 – 10, * and #) should display
3. To Exit, press and hold Button 1 for 5 seconds or until Display returns to ‘Test Mode Switches’

Test Mode Relays:

This Mode allows you to test the following relays:

1. Compressor
2. Fluorescent Light
3. Heater
4. Fan
1. Enter on Button 1 – Compressor ‘Off’
2. Enter again on Button 4 – ‘Off’ flashes
3. Advance on Button 2 – ‘On’ flashes
4. Enter on Button 4 – Compressor should turn ‘on’ if relay is functional
5. Exit on Button 1 – Compressor will default back to ‘Off’

Repeat steps 1 through 5 for desired relay. To exit 'Test Mode' and return to the Main Menu, press Button 1 three times.

Cash Data:

This Mode allows you to retrieve the total Historical Cash from product purchases.

1. Enter on Button 4 – the non-re-settable, Historical Cash Total will scroll
2. Advance on Button 2 to scroll through the shelves
3. Enter on Button 4 to show the columns in the shelves
4. Press Button 1 to exit.

Sales Data:

This Mode allows you to retrieve the total Historical Sales from product purchases.

1. Enter on Button 4 – the non-re-settable, Historical Sales Total will scroll
2. Advance on Button 2 to scroll through the selections
3. Enter on Button 4 to show the columns in the shelves
4. Press Button 1 to exit.

Discount Counter:

This Mode will only display when 'Discounts' are used. It allows access to the Sales and Cash Data for discounted vends.

1. Enter on Button 4 – 'Cash Data'
2. Enter again on Button 4 – Display will read 'Cash Data Total' and display the value of all discounts towards paid sales. This total is non-re-settable and begins when the 'Discount' feature is enabled.
3. Advance on Button 2 to scroll through the various selections
4. Press Button 1 to exit
5. Advance on Button 2 – 'Sales Data'
6. Enter on Button 4 – 'Sales Data Total' will display as well as the number of discounted sales. This total is non-re-settable and begins when the 'Discount' feature is enabled
7. Advance on Button 2 to scroll through the various selections
8. Press Button 1 to exit.

Free Counter:

This Mode will only display when 'Free Vends' are made. It allows the user access to the number of 'Free Sales and Cash Data' lost.

1. Enter on Button 4 – Cash Data total XX.XX, which is the value of the money lost based on the set price. This total is non-re-settable and begins when the 'Free Vend Override' is enabled.
2. Advance on Button 2 – 'Sales Data Total X', which is the total number of products dispensed. This total is non-re-settable and begins when the 'Free Vend Override' is enabled.
3. Press Button 1 to exit.

Clearing the Cash Data, Sales Data, Discount Counter or Free Counter:

To reset the individual selection counter, scroll to the selection number, press and hold buttons

1 and 4 for 3 seconds, **0000 will display**. You can also set 'MIS Auto Reset' to 'On' under 'Configuration'

Shelf Position:

This Mode shows the shelf location for individual shelf in the machine. The distance of each shelf is based off the lowest shelf. The values are displayed in "inches"

Enter on Button 4

1. Advance on Button 2 – 'Shelf X Y inches' X : Shelf number , Y is the total distance from the bottom shelf
2. Press Button 1 to exit.

Factory Default 5 Shelf Setting:

Shelf 1: 42", Shelf 2: 32", Shelf 3: 21", Shelf 4: 10" ,Shelf 5: 0"

Please note: Shelf height will change if shelves are added or removed.

Set Price:

This Mode allows you the option to price each selection to the same vend price, or price each shelf, tray or column.

To set all selections to a 'single price':

1. Enter on Button 4 – All Selections. XX will display (current vend price)
2. Enter again on Button 4 –. XX (current vend price) will flash
3. Advance on Button 2 to increase the price
4. Press Button 3 to decrease the price
5. Press Button 4 to save change
6. Press Button 1 to exit.

To set price per shelf:

1. Enter on Button 4 – Set Price - Shelf 1
2. Enter on Button 4 again – Shelf 1 - All Columns displays
3. Enter on Button 4 – Shelf 1 – All columns XX flashes
4. Advance on Button 2/ decrease on Button 3 to desired price
5. Press Button 4 to save change – Shelf 1 – All columns XX
6. Press Button 1 – Set Price – Shelf 1
7. Advance on Button 2 – Set Price – Shelf 2
8. Set prices following steps outlined above for the balance of shelves
9. Exit on Button 1 twice to return to Set Price

To set price per column:

1. Enter on Button 4 – Shelf 1 – All Columns
2. Advance on Button 2 to begin pricing individual columns
3. Enter on Button 4 – Column 0 and current price flashes

4. Advance on Button 2/ decrease on Button 3 to desired price
5. Press Button 4 to save change

Set Price (Continued)

6. Continue as outlined above for all columns on Shelf 1
7. Press Button 1 to exit once all columns on Shelf 1 have been priced.
8. Advance on Button 2 – Shelf 2
9. Price columns as indicated above for Shelves 2 through 7
10. Exit on Button 1 twice to return to Set Price

Space To Sales:

1. Scroll through the menu using Button #2 until "Space to Sales" is displayed.



Press Button# 4 to Enter.

2. The screen will display "Space to Sales Custom".



3. Press Button # 4
4. Display will read "Custom STS Clear All? Yes-4 No-3". To clear previous CSTS settings, press Button # 4. If you do not want to clear previous CSTS settings, press Button # 3.



5. Press Button # 4
6. Display will show "Set Custom STS Shelf#-- Group:--"



Space to Sales (Continued)

7. Using the keypad enter selection # and group number (1-99) you wish to assign the selection to.

To confirm press the "#" button.

To Clear press the "*" button.

eg: To assign selections # 10, 11 to group 1

- a. At "Set Custom STS Shelf#-- Group: --" screen, press 1, 0 , 1 which will be displayed on the screen next to "Group"



- b. To confirm choices, press the "#" button.
c. Press button #4, the display will return to "Set Custom STS" Menu as shown below



- d. At "Set Custom STS Shelf # -- Group: --" screen, press 1, 1 ,1 which will be displayed as follows



- e. To confirm choices, press the "Enter" button
The screen will display "Custom STS Display Shelf # 11 Group 1"
This is the display mode –



To check the CSTS settings at the "Custom STS Display" press buttons 2/3 to scroll through.
You can repeat Step 8 for assigning Shelf and group number.

Space to Sales (Continued)

8. Exit the settings:

Press Button #1



Press button # 1.

The display shows the following:

"Custom STS Save ? Yes-4 No-3 "



9. Save or Discard the Settings

Press button # 4 to Save

The display will indicate the status as follows:



Discard the settings:

Press button # 3 to Abort

The display will indicate the status as follows:



10. Custom Space to Sales is ready to use. Please close the door and perform the vending.

Note: Vending Rule in a connected selection number.

If selection 10-12 are connected, the vending machine will sequence through the selection 10, 11 and 12 until all of them are sold out. It will set all grouped selection as not available if any one of them is sold out.

Assigning all selection in a shelf to a group:

If you want to assign all selection on shelf 5 to a single group.

Example: Shelf # 50,51,52,53,54,55,56,57,58 to group 6

Follow Step 1 through 6.

At "Set Custom STS Shelf#-- Group: --" screen, press 5,9 which will be displayed on the screen next to "Shelf#5*", press 6 which will be displayed on the screen next to "Group"

Button 9 in the setting mode is displayed as "*" which is equivalent to all selections in shelf number designated by the preceding number.

Example: 5* is all selections in shelf 5.



Follow Step 8 and 10 to set CSTS.

Configuration:

To change individual options for Configuration Settings, enter the option on Button 4. Re-enter on Button 4, 'On or Off' will be flashing. Advance to 'On or Off' on Button 2 and save the change on Button 4. Program each Configuration Option in this manner.

Configuration Options are detailed below:

Multi-Price:

On – Selections may be programmed individually

Off – Single Price based on price of Selection 1

Timing Features:

On - Access to 'Clock Settings' and associated modes

Off – Access is denied

Door Summary:

On - Sales, Cash and Errors are displayed when outer door is opened

Off – Sales and Cash are not displayed, error summary will be

MIS Auto Reset:

On - Pressing the Door Switch will reset individual selection data back to 0

Off – Sales and Cash Data will not be reset by the Door Switch

Consumer Overpay:

On - Money will be accepted when the 'Correct Change Light' is on and there is insufficient coin

in the coin tubes.

Off – Exact change only required to make a vend

Save Credit Timer:

On - Credit established will display for 5 minutes only

Off – Credit established will remain until a vend is made or the coin return is pressed.

Force Vend:

On - The consumer will not be able to deposit money, press the coin return and receive change without attempting to vend first.

Off – Vendor is set as a 'change' machine. Consumer can deposit money, press the coin return and receive change.

Multi-Vend:

On - The consumer may insert sufficient credit to make multiple purchases.

Remaining credit will display until consumer either makes another selection or presses the coin return.

Off – Consumer makes a single purchase and change is returned immediately.

Configuration (Continued)

Deny Escrow:

On - Validator will stack all bills received

Off – Validator will 'hold' the bill in 'escrow' until the vending is complete. If the consumer presses the coin return the 'bill' is returned to them.

S/O (Error) Indicator:

On - A small symbol - (♦) will appear in the lower right-hand corner of the display when the vendor detects an error or a sold out column.

Off – The symbol will not appear.

Count by Selection/Price:

Count by Selection – Individual Sales and Cash Data are displayed.

Count by Price – Individual Sales and Cash Data is reported by vend price.

MIS Reset with DEX:

On - Non-Historical MIS Data will reset when a DEX read has been done.

Off – No MIS Data will be reset.

Double Talk: - This is a kit supplied by a third-party source**

On - Module will vocalize messages.

Off – Module will not vocalize messages.

Display Scroll:

On - Messages 'Scroll' from left to right side of display.

Off – Messages do not scroll.

Display Temperature:

Off – Cabinet temperature will not display.

Ref – Internal Refrigeration Temperature will display as 'Refrigeration Temperature'.

Cbt – Internal Cabinet Temperature will display as 'Cabinet Temperature'. **

** Note: Requires Temperature Lockout Kit in order to display

Set # of Trays:

2/3 : Set the total number of trays in a machine : 2 : 6 Column , 3 : 9 column

DEX Version:

Trade/Coke/Pepsi - Options for machine type

Door Closed Password:

Allows the operator to set a password to access Sales Data when the door is closed. **This function does not work if a vend price is set at 0.00 **

1. Enter on Button 4 – current 'Password' will display with the 1st digit flashing indicating that it is ready to be edited
 2. Press Buttons 2 and 3 to change the digits. NOTE: Valid digits are 1 through 6. The Password 0000 will disable this feature.
 3. Press Button 4 to save digit and advance to the next
 4. Press Button 4 after 4th digit is assigned – Door Closed Password will display
- ** Do not close door prior to programming all 4 digits of the password.

Set Language:

The current languages available for customer messages during sales mode are: English and Spanish.

1. Enter on Button 4 – current language will display
2. Enter on Button 4 again – current language flashes
3. Advance on Button 2 to desired language
4. Press Button 4 to save
5. Press Button 1 to exit.

Set Clock:

When the 'Timing Features' in Configuration Mode is turned 'On', this Clock can be set.

1. Enter on Button 4 at Set Clock – Enable Off will display (If no prior programming was done)
2. Enter on Button 4 – Off will flash
3. Press Button 2 to advance Off to On
4. Press Button 4 to save setting
5. Advance on Button 2 – 'Daylight Savings'
6. Enter on Button 4 – current setting will display
7. Press Button 4 – current setting flashes
8. Advance on Button 2 to desired setting
9. Press Button 4 to save setting
10. Press Button 1 to exit Daylight Savings
11. Advance on Button 2 - MM/DD/YYYY HH:MM will display
12. Enter on Button 4 – MM flashes (month)
13. Advance on Button 2 to correct month

14. Press Button 4 to 'save' – DD flashes (day)
15. Advance on Button 2 to correct day
16. Press Button 4 to 'save' – YYYY - with YY flashing (last 2 digits of year)
17. Advance on Button 2 to correct year
18. Press button 4 to 'save' – HH flashes (hour)
19. Advance on Button 2 to correct hour
20. Press Button 4 to 'save' – mm flashes (minutes)
21. Advance on Button 2 to correct minutes
22. Press Button 4 to save setting – MM/DD/YYYY HH:MM will display
23. Press Button 1 to exit - Set Clock

Lighting:

'Timing Features' in Configuration Mode must be turned 'On' to access this feature. You have the option to turn the lights or LED off once during a 24-hour period for energy conservation. The options available are Cabinet and LED.

Example:

Lighting Mode – Enable On/ Off
Lighting – Cabinet
Start Time 1 – Start Day 1 – Mon-Sun/Everyday
Start 1 hh:mm
Stop Time 1 – Stop Day 1 – Mon-Sun/Everyday
Stop 1 hh:mm

Lighting – LEDs
Start Time 2 – Start Day 2 – Mon-Sun/Everyday
Start 2 hh:mm
Stop Time 2 – Stop Day 2 – Mon-Sun/Everyday
Stop 2 hh:mm

* On – associated with a programmed start/stop
* Off – not associated with a programmed start/stop

1. Press Button 4 – 'Lighting – Mode Enable Off (if no prior program was set)
2. Press Button 4 – Off is flashing
3. Advance on Button 2 – On
4. Press Button 4 to save setting – Lighting – Mode Enable On
5. Press Button 4 to 'save'

6. Advance on Button 2 – Lighting Cabinet
7. Advance again on Button 2 – Lighting LEDs

To Set Lighting Cabinet or Lighting LEDs:

1. Press Button 4 to enter – Start Time 1(Lighting) or Start Time 2 (LEDs)
2. Press Button 4 again – Start Day 1 or 2 – mon-sun-everyday Off/On
3. Press Button 4 again – Off/On flashes
4. Press Button 2 to scroll between On/Off
5. Press Button 4 to save setting
6. Press Button 1 - Start Day 1 or 2
7. Advance on Button 2 - Start 1: 08:00 (if no prior programming was set – hh:mm)
8. Enter on Button 4 at 'Start 1 or 2 - the 08 flashes (hour)
9. Advance on Button 2 to desired setting

Lighting (Continued)

10. Press Button 4 to save – :00 begins flashing (minutes)
11. Advance on Button 2 to desired setting
12. Press Button 4 to save setting – Start 1 or 2 and hh:mm you programmed will display
13. Press Button 1 - Start Time 1or 2
14. Press Button 2 to advance to Stop Time 1or 2
15. Press Button 4 – Stop Day 1 or 2
16. Press Button 4 – Stop Day 1 or 2 – mon-sun-everyday Off/On
17. Repeat above steps for Stop Time 1or 2

Refrigeration:

If 'Timing Features' in Configuration Mode are 'Off', you will only have access to the following features:

Set point

Sensor Reading

Degree X – Celsius or Fahrenheit

Fan Default

Periodic Defrost – On/Off

When Timing Features is set on in Configuration, you can raise the cabinet temperature 18 °F/ 4°C twice during a 24 hour period for energy conservation.

Refrigeration:

1. Enter on Button 4 – 'Set Point'
2. Enter on Button 4 – current 'Set Point' will display – (Factory setting is 36°F/2°C)
3. Press Button 4 – current temperature will flash
4. Press Button 2 or 3 to scroll through the following settings:

Temperature setting	32	33	34	35	36	37	38	39	40
Cut-in Temperature (F)	34	35	36	37	38	39	40	41	42
Cut-out Temperature (F)	31	32	33	34	35	36	37	38	39
Nominal Temperature (F)	32	33	34	35	36	37	38	39	40
Nominal Temperature (C)	0	0.5	1	1.5	2	2.5	3	3.5	4

5. Press Button 4 to 'save' desired setting
6. Press Button 1 to exit – Set Point
7. Advance on Button 2 – Sensor Reading
8. Press Button 4 – Current reading in either F/C will display – must be set as Ref in Configuration first.
9. Press Button 1 – Sensor Reading
10. Advance on Button 2 – Degree F/C
11. Enter on Button 4 – current setting flashes
12. Press Button 2 to scroll between F/C
13. Press Button 4 to save desired setting

Refrigeration (Continued)

Fan Default:

Default Mode: Fan on when door closes and off when door opens.

Mode 1: Fan is time delayed with compressor cut in/cut out

1. At cut in, fan will come on after compressor turns on
2. At cut out, fan will continue to run 1 minute after compressor is off
3. Fan off with door switch activation

Periodic Defrost:

1. Press Button 4 – On/Off
2. Press Button 4 – On/Off flashes
3. Advance on Button 2 to desired setting
 - On – The vendor will defrost every 6 hours for 30 minutes. This feature is used in extremely high humidity environments.
 - Off – The vendor will not defrost every 6 hours.
4. Press Button 4 to 'save' setting
5. Press Button 1 to exit

When 'Timing Features' in Configuration are turned 'On', the following Modes are accessible:

Refrigeration – Enable Timer On/Off
 Start Time – Start Day 1/2 – Mon-Sun/All
 Start hh:mm
 Stop Time – Stop Day 1/2 – Mon-Sun/All
 Stop hh:mm

Enable Timer:

1. Press Button 4 – On/Off flashes
2. Advance on Button 2 to desired setting
3. Press Button 4 to 'save' setting
4. Press Button 2 – Start Time 1. Time Refrigeration turns off/begin conservation
5. Press Button 4 – Start Day 1
6. Press Button 4 – current setting flashes
7. Press Button 2/ 3 to scroll through days of the week or 'All'
8. Press Button 4 – On/Off flashes
9. Advance on Button 2 to desired setting
10. Press Button 4 to 'save' setting
11. Press Button 1 to exit – Start Day 1
12. Press Button 2 to advance to Start 1 hh:mm
13. Press Button 4 at Start 1 hh:mm – hh flashes

Refrigeration (Continued)

14. Press Button 2 to set the hh
15. Press Button 4 to 'save' setting – mm flashes
16. Press Button 2 to set: mm
17. Press Button 4 to 'save' setting
18. Press Button 1 to exit – Start Day 1
19. Advance on Button 2 – Stop Day 1
20. Follow the steps outlined above to complete Stop Time 1, Start Time 2, Stop Time 2
21. Press Button 2 to advance

TempLO (Temperature Lock Out):

1. Enable timing feature in configuration
2. Advance on button 2 to TempLO shlf 1
3. Press Button 4 – Disable will flash
4. Advance on Button 2 – Enable
5. Press Button 4 to 'save' setting
6. Continue in above manner for all shelves associated with Temperature Lockout

Note: The Temperature Lockout Feature (TempLO) requires an additional temperature sensor connected at the top left on the inside of the cabinet. When the cabinet temperature is above 41°F/ 3.5 °C for more than 15 minutes, the vendor will shut down any shelves associated with the Temperature Lockout Feature.

Sales Block: (8 Blocks are available in this Mode)

Sales Block allows the operator to turn Selections On/Off at 8 intervals during a 24-hour period. Times must not overlap. You must enter the following information:

Selections – the selection buttons that will be disabled during the blocked time

Start Time – the time selections will be 'Off Line'
Start Days – the days selections will be 'Off Line'
Stop Time – the time selections will turn back 'On'
Stop Days – the days selections will turn back 'On'

Sales Block 1:

1. Press Button 4 – Enable On/Off, Light
Enable Off – Block Function is disabled
Enable On – Block Function is enabled
Enable Light – Block Function is enabled and lights are off when blocking occurs
2. Press Button 4 – On/Off Light flashes
3. Press Button 2 to advance to desired setting
4. Press Button 4 to 'save' setting – your choice will display
5. Press Button 2 to advance to – Selections

Sales Block (Continued)

Choose Selections:

1. Press Button 4 at Selections – All Selections On/Off will display
2. Press Button 4 – On/Off flashes
3. Advance on Button 2 to desired setting
4. Press Button 4 to 'save' setting
5. Press Button 1 to exit

Set all Selections:

1. Press Button 4 – All Selections On/Off
2. Press Button 4 – On/Off flashes
3. Press Button 2 to advance to desired setting
4. Press Button 4 to 'save' setting
5. Press Button 1 to exit – Selections

Selections per Shelf:

1. Press Button 4 – All Selections On/Off
2. Press Button 2 to advance to desired shelf
3. Press Button 4 – All Columns
4. Press Button 4 again – On/Off flashes
5. Press Button 2 to advance to On/Off
6. Press Button 4 to 'save' setting
7. Press Button 1 twice to exit – Selections

Set Columns:

1. Press Button 4 – All Selections On/Off
2. Press Button 2 to advance to desired shelf
3. Press Button 4 – All Columns
4. Press Button 2 to advance to desired Column
5. Press Button 4 – On/Off flashes
6. Press Button 2 to advance to desired setting
7. Press Button 4 to 'save' setting
8. Press Button 1 twice to exit

Sales Block (Continued)Start Time: (Beginning of Blocking Period)

1. Press Button 2 – Start Time
2. Press Button 4 – Start Day
3. Press Button 4 – Every Day
4. Press Button 2 or 3 to select days or Every Day
5. Press Button 4 to change the status of the days – On/Off flashes
If the status is 'On', product delivery is blocked
If the status is 'Off', product delivery is normal
6. Press Button 2 to change status
7. Press Button 4 to 'save' setting
8. Press Button 1 – Start Day
9. Press Button 2 – Start hh:mm
10. Press Button 4 – hh (hour setting) flashes
11. Press Button 2 to advance to desired Start Hour. (Military Time)
12. Press Button 4 to 'save' setting -: mm flashes
13. Press Button 2 to advance to desired minutes
14. Press Button 4 to 'save' setting
15. Press Button 1 to exit and return to Start Time

Stop Time: (End of Blocking Period)

1. Advance on Button 2 – Stop Time
2. Press Button 4 – Stop Day
3. Press Button 4
4. Press Button 2 or 3 to select days or Every Day

5. Press Button 4 to change the status of the days – On/Off flashes
If the status is 'On', product delivery is blocked
If the status is 'Off', product delivery is normal
6. Press Button 2 to change status
7. Press Button 4 to 'save' setting
8. Press Button 2 – Stop hh:mm
9. Press Button 4 – hh (hour setting) flashes
10. Press Button 2 to advance to desired Start Hour. (Military Time)
11. Press Button 4 to 'save' setting -: mm flashes
12. Press Button 2 to advance to desired minutes
13. Press Button 4 to 'save' setting
14. Press Button 1 to exit and return to Stop Time
15. Pressing Button 1 again will return the operator to Sales Block 1-8 mode

Discount:

This feature permits the operator to program the vendor to discount product once during a 24-hour period. To program a Discount, you must enter the following information:

Discounted Selection(s) – Selection(s) offered at a discounted price

Start Time – Time the Discount begins

Start Day(s) – Days the Discount is offered

Stop Time – Time(s) Discount ends

Stop Day – Day(s) the Discount ends

Amount – Amount subtracted/discounted from original vend price

Choose Selections:

1. Press Button 4 – Enable On/Off
Enable Off – Discount function is disabled
Enable On – Discount function is enabled
2. Press Button 4 – Off flashes
3. Press Button 2 to select desired setting
4. Press Button 4 to 'save' setting – Enable 'On' will display
5. Press Button 2 – Discounted Selection

Set Discount for 'All' Selections:

1. Press Button 4 – Discount all selections 'Off'
2. Press Button 4 – 'Off' flashes
3. Press Button 2 to Advance to 'On'
4. Press Button 4 to 'save' setting
5. Press Button 1 to exit

Set Discounted Selections per Shelf:

1. Press Button 4 – Discount All Selections 'Off'
2. Advance on Button 2 to desired shelf number
3. Press Button 4 to enter – Shelf X - All Columns 'Off'
4. Press Button 4 – On/Off flashes
5. Advance on Button 2 to desired setting
6. Press Button 4 to 'save' setting
7. Press Button 1 to exit

Start Time:

1. Advance on Button 2 – Discount Start Time
2. Press Button 4 – Discount Start Day

Discount (Continued)

3. Press Button 4 – Mon-Sun/Everyday
4. Press Button 4 again – Everyday flashes
5. Advance on Button 2 to desired day
6. Press Button 4 – On/Off flashes
7. Advance on Button 2 to change current status
8. Press Button 4 to 'save' setting
9. Set balance of Selections in manner described above
10. Exit on Button 1 – Discount Start Day
11. Advance on Button 2 – Start hh:mm (hour/ minutes)
12. Press Button 4 – hh flashes
13. Advance on Button 2 to desired setting
14. Press Button 4 to 'save' setting :mm flashes
15. Advance on Button 2 to desired setting
16. Press Button 4 to 'save' setting
17. Press Button 1 to exit – Start Time

Stop Time:

1. Advance on Button 2 – Stop Time
2. Press Button 4 – Stop Day
3. Press Button 4 – mon-sun/everyday
4. Press Button 4 again – everyday flashes
5. Advance on Button 2 to desired day
6. Press Button 4 – On/Off flashes
7. Advance on Button 2 to change current status
8. Press Button 4 to 'save' setting

9. Set balance of Selections in manner described above
10. Exit on Button 1 – Stop Day
11. Advance on Button 2 – Stop hh:mm (hour/ minutes)
12. Press Button 4 – hh flashes
13. Advance on Button 2 to desired setting
14. Press Button 4 to 'save' setting :mm flashes
15. Advance on Button 2 to desired setting
16. Press Button 4 to 'save' setting
17. Press Button 1 to exit – Stop Time

Discount (Continued)

Set Discount Amount:

The Discount is the amount being subtracted from the regular vend price.

1. Press Button 4 - .00 flashing
2. Advance on Button 2 to desired discount amount
3. Press Button 4 to 'save' setting
4. Press Button 1 to exit – Discount Amount

Override: (Optional Kit)

The Key Switch Override Kit allows the operator to 'bypass without removing' Timing Features the operator has programmed in the controller.

On – Key Switch will override these Timing features.

Off – Key Switch will not override these Timing features.

The following Timing features can be programmed to the key switch.

Free Vend – On/Off

Sales Blocking – On/Off

Discount – On/Off

Light Timing – On/Off

Refrigeration – On/Off

Free Vend:

1. Enter on Button 4 – On/Off flashes
2. Advance on Button 2 to desired setting
3. Press Button 4 to 'save' setting
4. Press Button 1 to exit – Free Vend

Program Sales Blocking, Discount, Light Timing and Refrigeration in the manner described above. Press Button 1 to exit.

Custom Message:

The custom message feature allows the operator to program a 2 line X 20 character message.

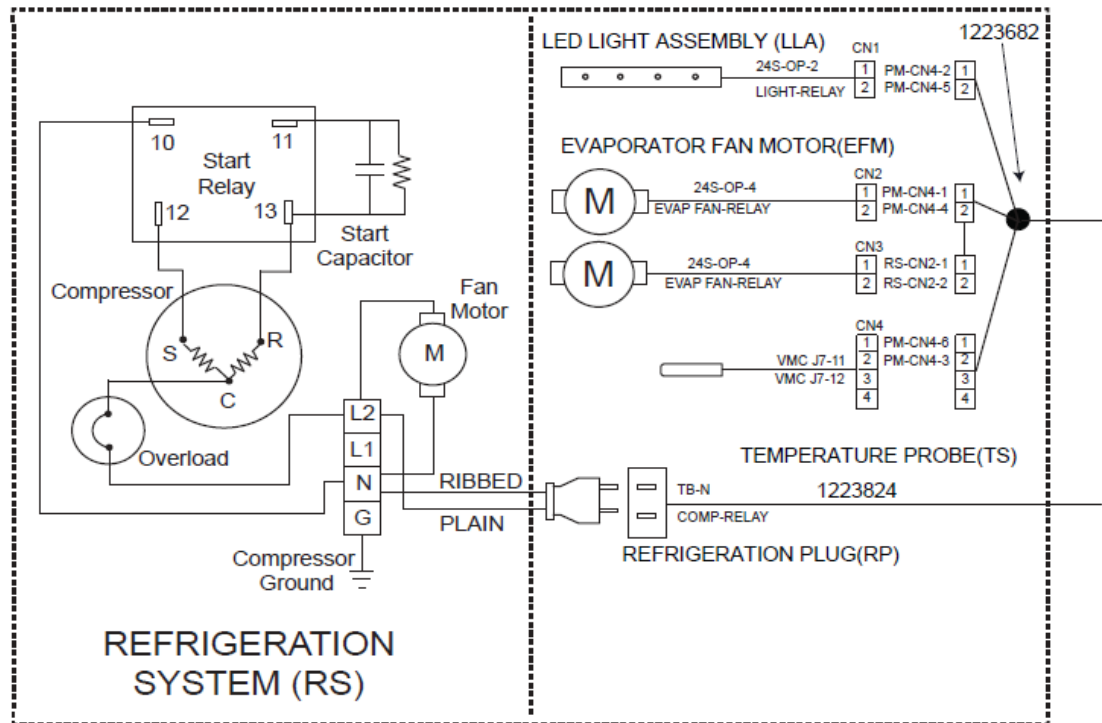
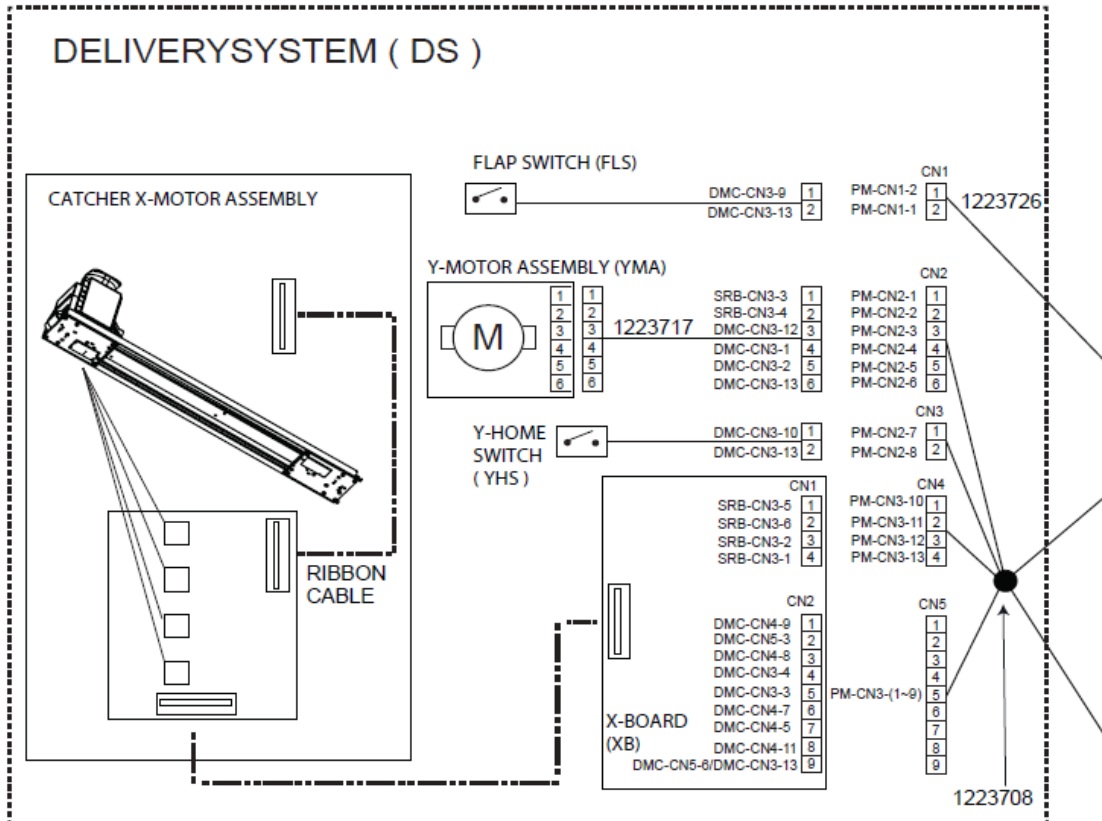
Note:

1. Press Button 1 to make a space between words.
 2. The message cannot be saved until all the characters on the top line have been entered.
-
1. Press Button 4 at Custom Message – Enable On/Off
 2. Press Button 2 – On/Off flashes
 3. Advance on Button 2 to On
 4. Press Button 4 to 'save' setting
 3. 5 Advance on Button 2 – current messages displays
 5. Press Button 4 – 1st character flashes
 6. Press Button 2 to advance to desired character
 7. Press Button 4 to 'save' character – immediately advances to next character
 8. Continue setting message using steps outlined above
 9. Press and hold Button 1 for 3 seconds to save the message and exit mode

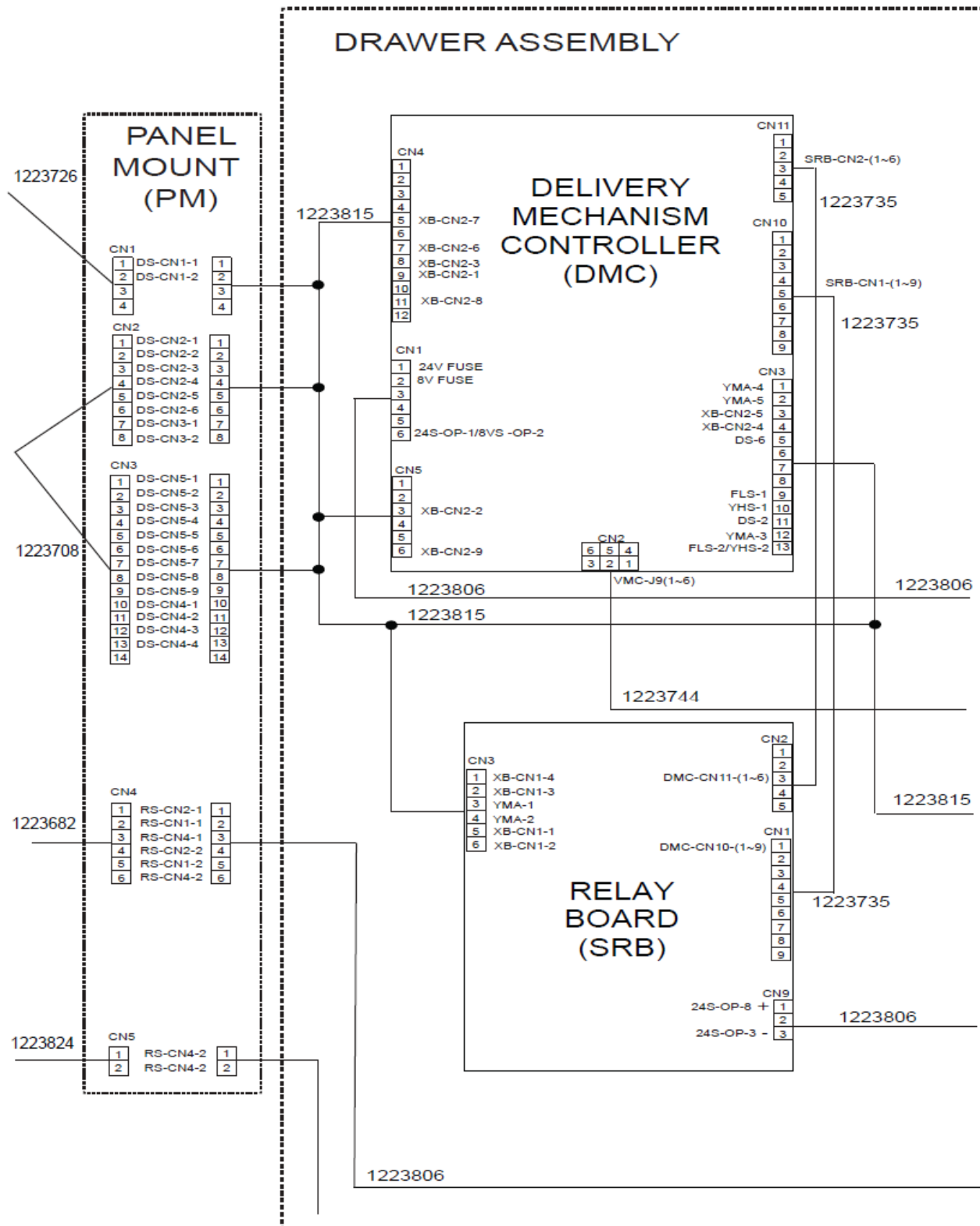
Return:

Exits the programming mode and returns the vendor to stand-by.

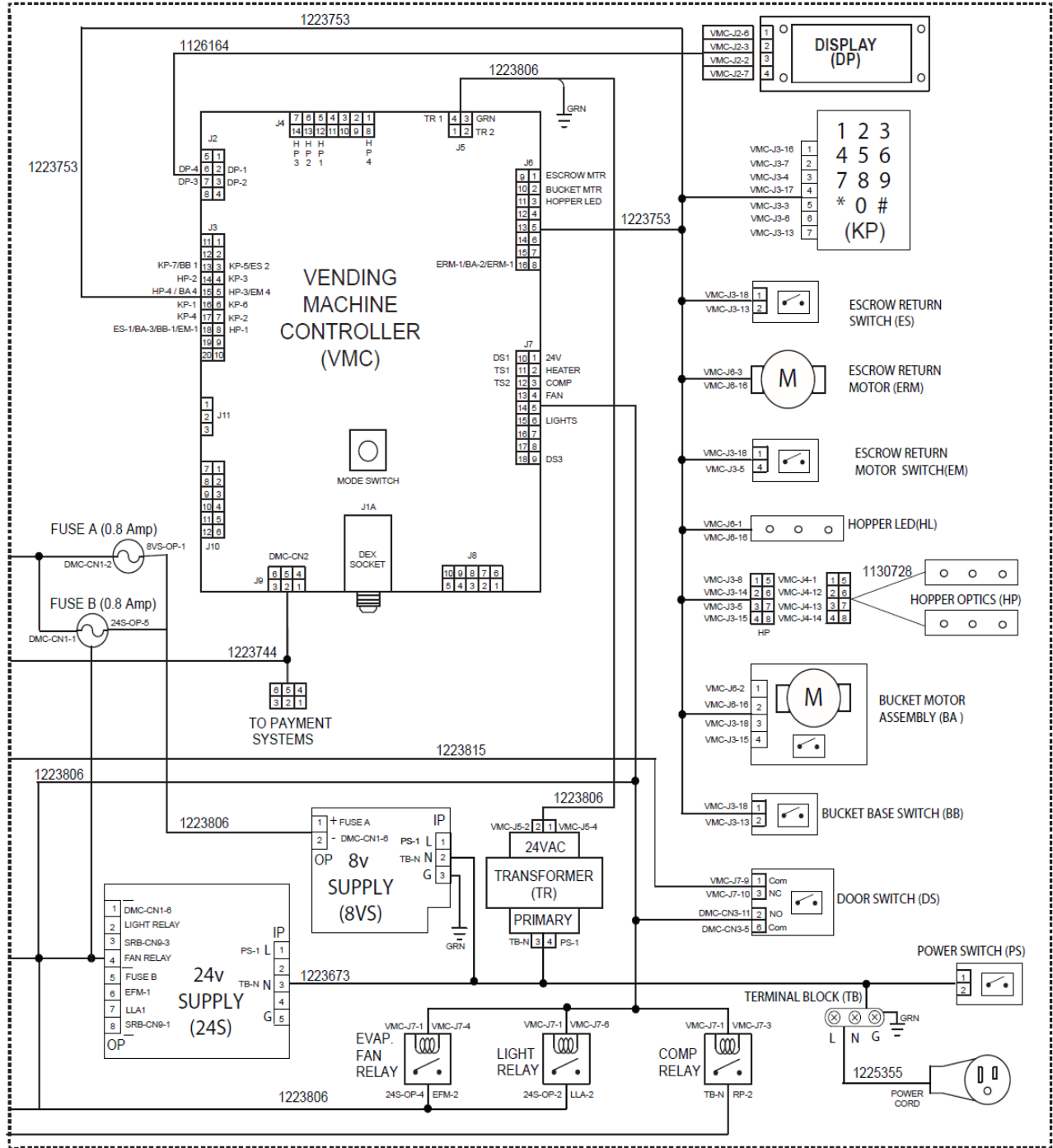
WIRING DIAGRAM



WIRING DIAGRAM (CONTD)



WIRING DIAGRAM (CONTD)



1223762A

Please note: The following harness # has changed.

Original #	1223806	1223815	1130728
Replacement #	1280568	1280567	1280566